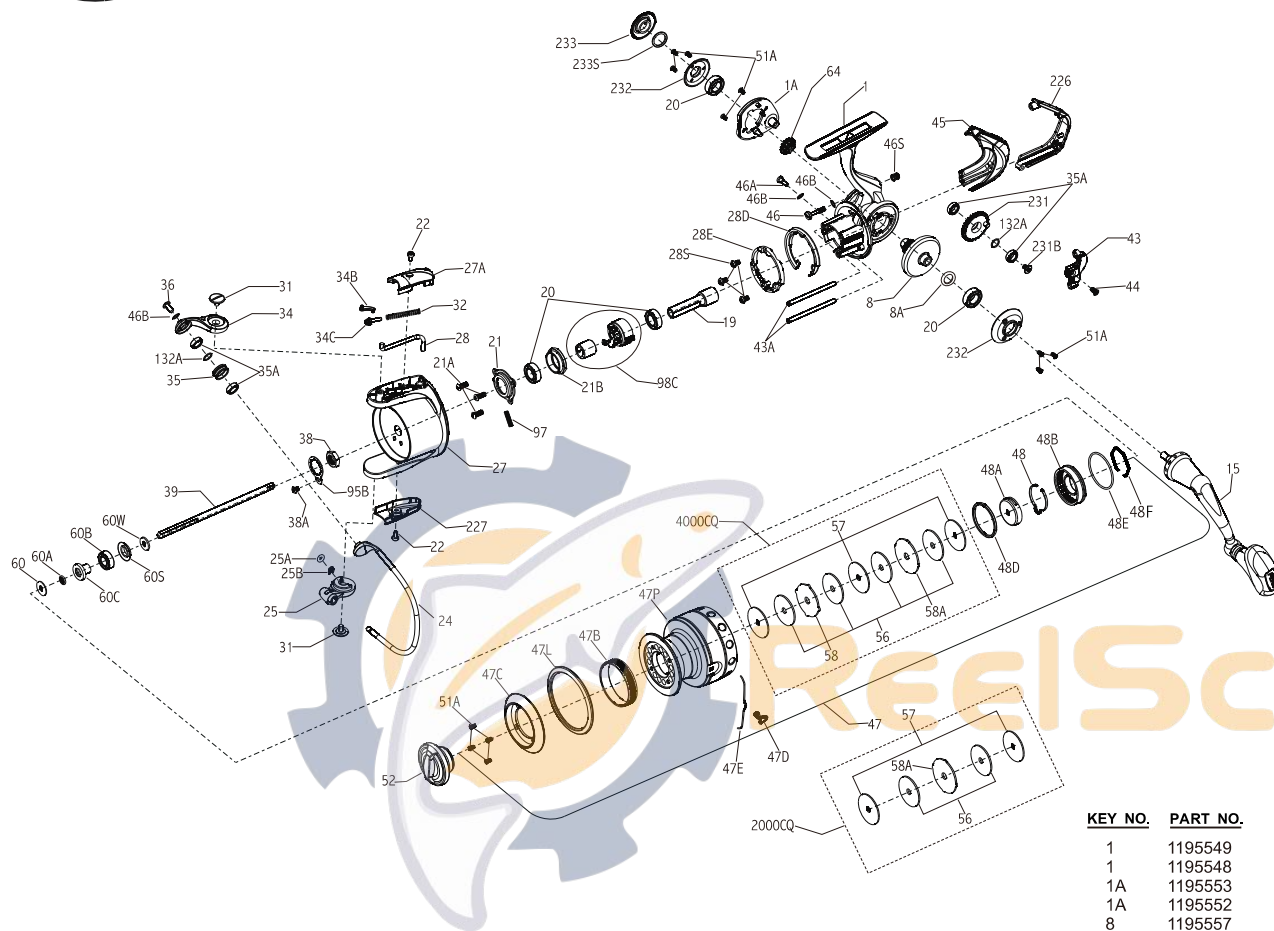


**PENN** PARTS LIST FOR MODELS 2000CQ AND 4000CQ



KEY NO.	PART NO.	DESCRIPTION
31	1195612	31-2000CQ Screw(2 Req.)
32	1195613	32-2000CQ Bail Spring
34	1195615	34-2000CQ Bail Arm
34B	1195617	34B-2000CQ Pivot Lever
34C	1195619	34C-2000CQ Pivot Arm
35	1195620	35-2000CQ Line Roller
35A	1195641	35A-2000CQ Ball Bearing(4 Req.)
36	1195642	36-2000CQ Screw
38	1195643	38-2000CQ Rotor Nut
38A	1195646	38A-2000CQ Screw
39	1195648	39-4000CQ Spool Shaft
39	1195647	39-2000CQ Spool Shaft
43	1195652	43-4000CQ Crosswind Block
43	1195651	43-2000CQ Crosswind Block
43A	1195656	43A-4000CQ Crosswind Block Pins(2 Req.)
43A	1195655	43A-2000CQ Crosswind Block Pins(1 Req.)
44	1195659	44-2000CQ Screw
45	1195661	45-4000CQ Maintenance Hatch
45	1195660	45-2000CQ Maintenance Hatch
46	1195664	46-2000CQ Screw
46A	1195665	46A-2000CQ Screw
46B	1222226	46B-2000CQ Washer(3 Req.)
46S	1195673	46S-2000CQ Spring
47	1195676	47-4000CQ Spool Assembly
47	1195674	47-2000CQ Spool Assembly
47P	1197234	47P-4000CQ Spool
47P	1197233	47P-2000CQ Spool
47B	1195681	47B-4000CQ Spool Band
47C	1195689	47C-4000CQ Spool Lip Cover
47C	1195688	47C-2000CQ Spool Lip Cover
47D	1195692	47D-2000CQ Line Clip
47E	1195693	47E-2000CQ Line Clip Spring
47L	1195699	47L-4000CQ Spool Lip
47L	1195697	47L-2000CQ Spool Lip
48	1195703	48-2000CQ Spool Click
48A	1195705	48A-2000CQ Spool Click Retainer
48B	1195708	48B-2000CQ Spool Click Housing
48D	1195713	48D-2000CQ Spacer Ring
48E	1195716	48E-2000CQ O-Ring
48F	1251980	48F-2000CQ Clip
51A	1195720	51A-2000CQ Screw(12 Req.)
52	1195722	52-2000CQ Drag Knob Assembly
56	1195729	56-2000CQ Drag Washer HT-100(4 Req.)
56	1195729	56-2000CQ Drag Washer HT-100(2 Req.)
57	1195739	57-2000CQ Keyed Washer(3 Req.)
57	1195739	57-2000CQ Keyed Washer(2 Req.)
58	1195745	58-4000CQ Earred Washer
58A	1195748	58A-2000CQ Earred Washer
60	1195751	60-2000CQ Spacer Washer
60A	1195755	60A-2000CQ O-Ring
60B	1195757	60B-2000CQ Ball Bearing
60C	1195758	60C-2000CQ Bearing Sleeve
60S	1195761	60S-2000CQ Seal
60W	1195763	60W-2000CQ Spool Shaft Washer
64	1195767	64-4000CQ Idler Gear
64	1195766	64-2000CQ Idler Gear
95B	1195770	95B-2000CQ Rotor Locking Plate
97	1195772	97-2000CQ Clutch Spring
98C	1195773	98C-2000CQ Clutch/Sleeve Assembly
132A	1195778	132A-2000CQ Spacer(2 Req.)
226	1195783	226-4000CQ Rear Cover
226	1195781	226-2000CQ Rear Cover
227	1195793	227-4000CQ Cam Cover
227	1195790	227-2000CQ Cam Cover
231	1195805	231-4000CQ Crosswind Gear
231	1195801	231-2000CQ Crosswind Gear
231B	1195812	231B-2000CQ Crosswind Gear
232	1195815	232-4000CQ Bearing Retainer(2 Req.)
232	1195813	232-2000CQ Bearing Retainer(2 Req.)
233	1195823	233-2000CQ Bearing Cover
233S	1257635	233S-2000CQ O-Ring

KEY NO.	PART NO.	DESCRIPTION
1	1195549	1-4000CQ Housing
1	1195548	1-2000CQ Housing
1A	1195553	1A-4000CQ Housing Plate
1A	1195552	1A-2000CQ Housing Plate
8	1195557	8-4000CQ Main Gear
8	1195556	8-2000CQ Main Gear
8A	1195560	8A-2000CQ Shim
15	1195563	15-2000CQ Handle Assembly
19	1195567	19-4000CQ Pinion
19	1195566	19-2000CQ Pinion
20	1181780	20-4200 Ball Bearing(4 Req.)
21	1195571	21-2000CQ Bearing Retainer
21A	1195572	21A-2000CQ Screw(3 Req.)
21B	1195573	21B-2000CQ Collar
22	1195575	22-2000CQ Screw(2 Req.)
24	1195921	24-4000CQ Bail Wire
24	1195576	24-2000CQ Bail Wire
25	1195590	25-2000CQ Bail Cam
25A	1195591	25A-2000CQ O-Ring
25B	1195592	25B-2000CQ Clip
27	1195594	27-4000CQ Rotor
27	1195593	27-2000CQ Rotor
27A	1195598	27A-4000CQ Bail Pivot Cover
27A	1195597	27A-2000CQ Bail Pivot Cover
28	1195602	28-4000CQ Trip Lever
28	1195601	28-2000CQ Trip Lever
28D	1195605	28D-4000CQ Friction Ring
28E	1195608	28E-4000CQ Friction Ring Cover
28S	1195611	28S-2000CQ Screw(3 Req.)